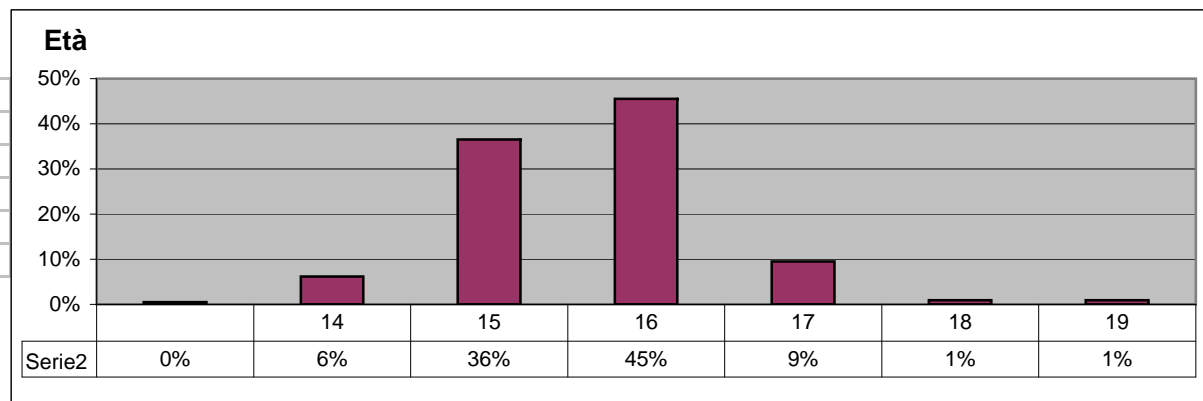


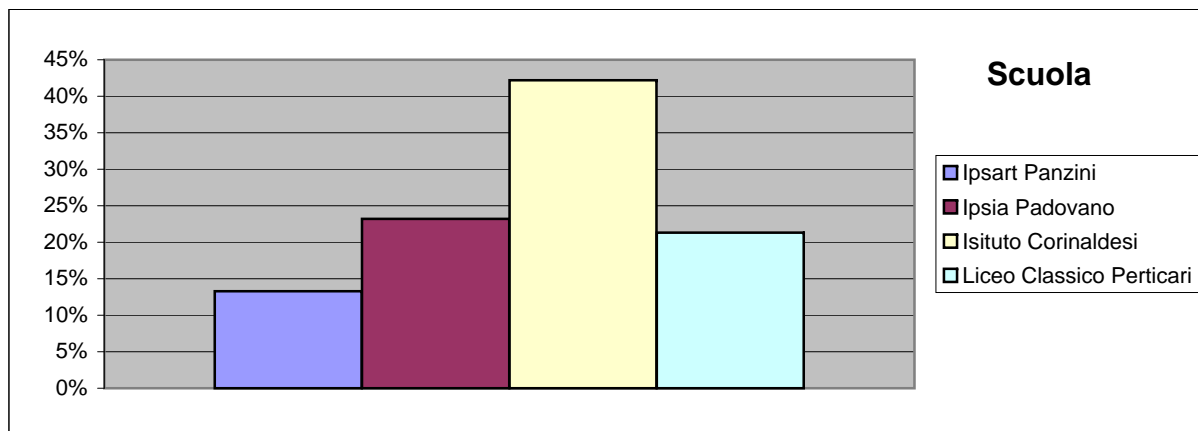
STATISTICHE RASSEGNA CINEMATOGRAFICA NIENTE DA CAPIRE 2013

Comune di Senigallia - Politiche Giovanili

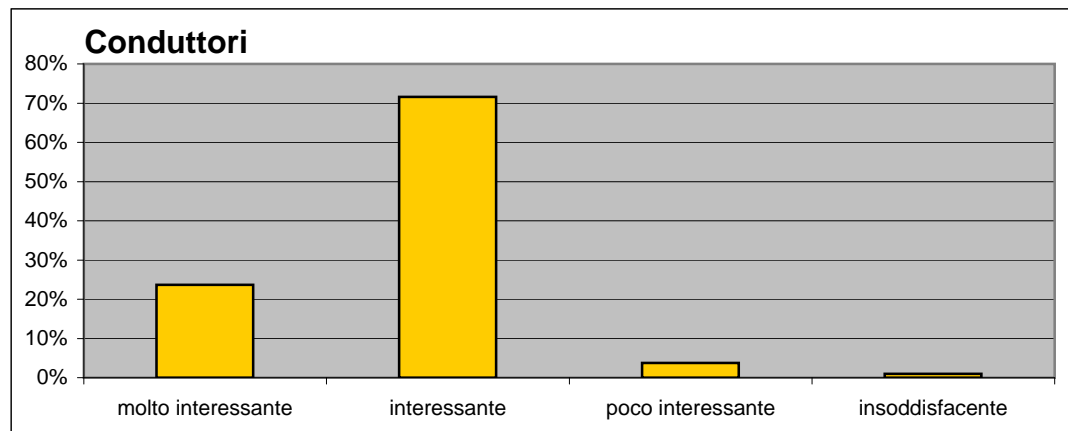
anni	ConteggioDiID	
	1	0%
14	13	6%
15	77	36%
16	96	45%
17	20	9%
18	2	1%
19	2	1%
tot.	211	



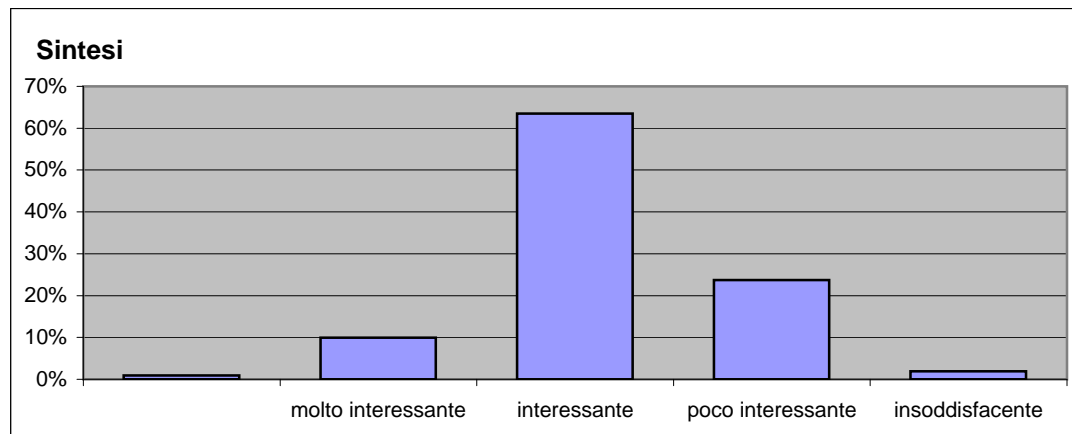
scuola	ConteggioDiID	
Ipsart Panzini	28	13%
Ipsia Padovano	49	23%
Isituto Corinaldesi	89	42%
Liceo Classico Perticari	45	21%
tot.	211	



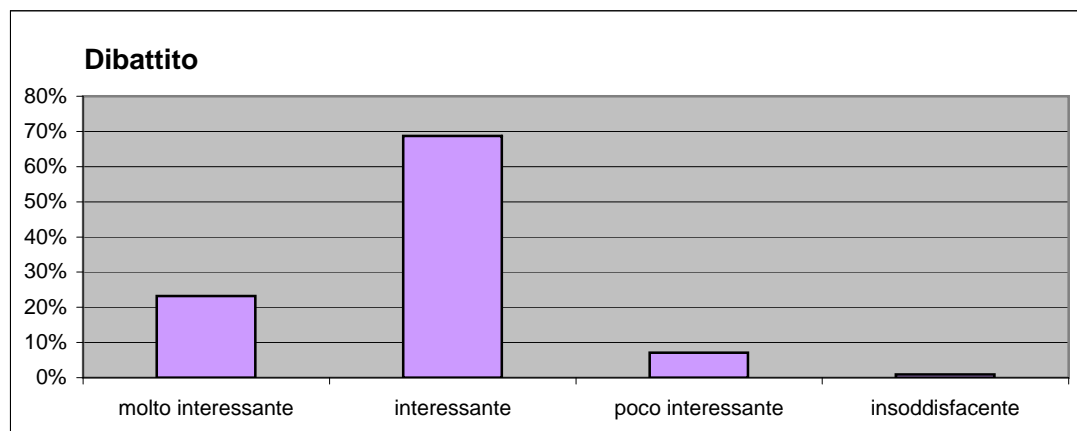
conduttori	ConteggioDiID	
molto interessante	50	24%
interessante	151	72%
poco interessante	8	4%
insoddisfacente	2	1%
tot.	211	



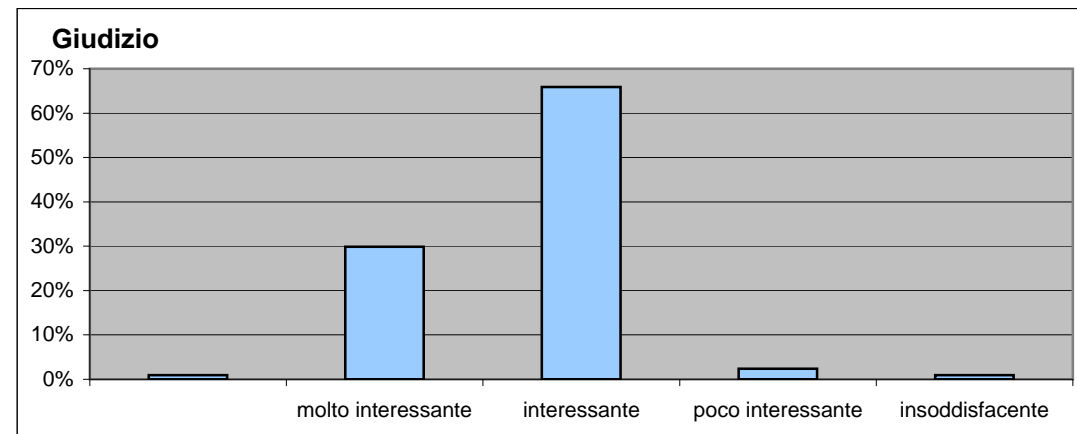
sintesi	ConteggioDiID	
	2	1%
molto interessante	21	10%
interessante	134	64%
poco interessante	50	24%
insoddisfacente	4	2%
tot.	211	



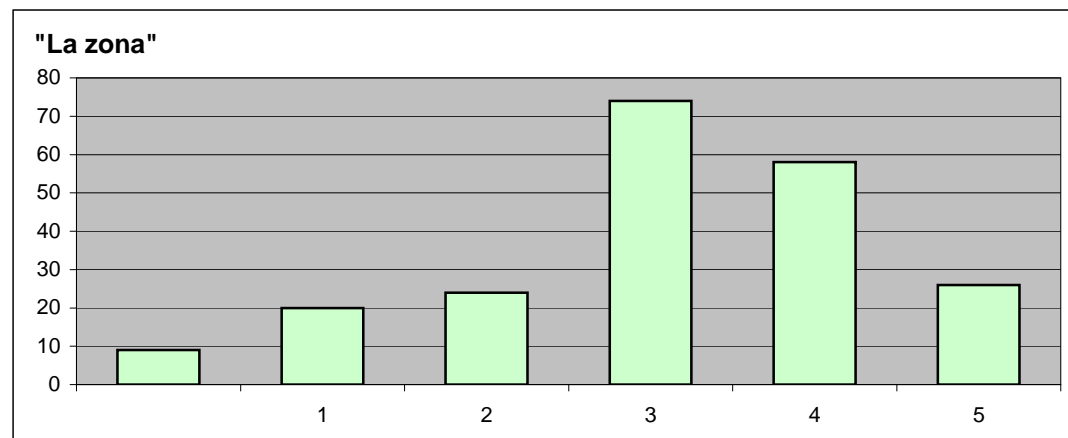
dibattito	ConteggioDiID	
molto interessante	49	23%
interessante	145	69%
poco interessante	15	7%
insoddisfacente	2	1%
tot.	211	



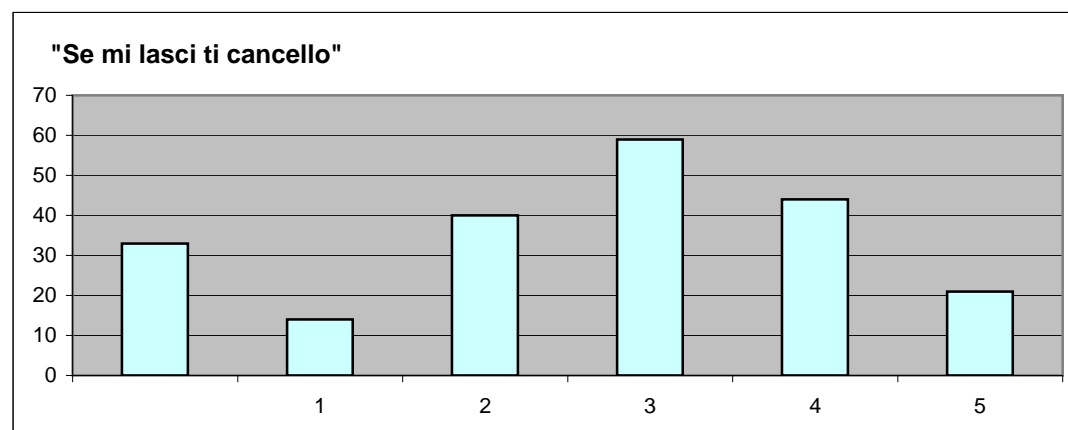
giudizio	ConteggioDiID	
	2	1%
molto interessante	63	30%
interessante	139	66%
poco interessante	5	2%
insoddisfacente	2	1%
tot.	211	



la zona	ConteggioDiID	
	9	4%
1	20	9%
2	24	11%
3	74	35%
4	58	27%
5	26	12%
tot.	211	



se mi lasci	ConteggioDiID	
	33	16%
1	14	7%
2	40	19%
3	59	28%
4	44	21%
5	21	10%
tot.	211	



onda	ConteggioDiID	
	14	7%
1	2	1%
2	2	1%
3	13	6%
4	81	38%
5	99	47%
tot.	211	

